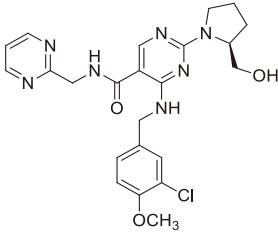


100mg 200mg
50mg

Avanafil Tablets
Afa' nafei Pian

4-[3- -4-]-2-[2S -2-
-1-]-N- -2- -5-



C₂₇H₃₀ClN₇O₃
483.95

2 2%

(N=711)	
	5.6%
	3.5%
	3.4%
	2.1%

1% 2%
URI 3 3 / 12
1%

8 CYP3A4

1.

PDE5

200mg
8.0mmHg 3.3mmHg 1

2 CYP3A4

CYP450 3A4 CYP3A4 CYP3A4

CYP3A4

CYP3A4

3

50mg

24 1

3

PDE5

4 4

	N 100	100mg N 99	200mg N 99
	1.0%	8.1%	12.1%
	0.0%	5.1%	10.1%
	0.0%	3.0%	5.1%
	0.0%	2.0%	3.0%
	1.0%	3.0%	1.0%
	1.0%	3.0%	2.0%
	0.0%	1.0%	3.0%
	0.0%	1.0%	2.0%

Peyronie

4

PDE5

NAION

NAION

NAION

NAION

2.5-11.8/10

NAION

50

PDE5

NAION

2

215

95%CI

1.06

4.34

2.27

95%CI

0.99

5.20

NAION

NAION

NAION

PDE5

NAION

PDE5

NAION

NAION

5.

PDE5

NAION

PDE5

NAION

PDE5

PDE5

PDE5

6.

PDE5

PDE5

PDE5

PDE5

PDE5

PDE5

PDE5

PDE5

PDE5

PDE5

PDE5

PDE5

PDE5

PDE5

PDE5

PDE5

PDE5

PDE5

1 100mg 2 200mg
50mg 100mg 200mg 15 15
1 30 200mg 15
2 50mg 15
3 CYP3A4 2215
CYP3A4 493 12 6
50mg 24 1
153 3 3
56.4 23-88 83.9% 13.8% 1.4%
1% 41.1% 30.6%
1.4% 2.0% 2.0% 1.7%
1 3 3
2%

	N=349	50mg N 217	100mg N 349	200mg N 352
	1.7%	5.1%	6.9%	10.5%
	0.0%	3.2%	4.3%	4.0%
	1.1%	1.8%	2.9%	2.0%
	2.9%	0.9%	2.6%	3.4%
	1.1%	3.2%	2.0%	1.1%

1% 2%
URI 1 2
200mg 56.4 23-88 52 712 2
200mg 50mg 100mg
2 2.8%
100mg 536 75%
200mg 5 1% 50mg
2 50mg

2 435
58.2 24-86 4

2%

	N=143	100mg N=146	200mg N=146
	0.7%	1.4%	8.9%
	0.0%	0.7%	4.1%
	0.0%	0.0%	2.1%

1

5 NAION
NAION NAION
50

1.

/ cGMP /

12

2.

3. GC GC PDE5

4. GC GC 3

6 <90/50mmHg >170/100mmHg 2

5. <30ml/min Child-Pugh C

6. NAION PDE5

CYP3A4 CYP450 3A4 CYP3A4 CYP3A4

CYP3A4 CYP3A4

50mg 24 1

PDE5 4 4

Peyronie

4 PDE5 NAION NAION

NAION NAION

2.5-11.8/10 NAION

50 PDE5 NAION

215 95%CI 1.06 4.34 2.27 95%CI 0.99 5.20 NAION NAION

NAION PDE5 NAION

5. PDE5 NAION PDE5

NAION PDE5

6. PDE5

PDE5

PDE5

PDE5

50mg PDE5 PDE5

PDE5

7. PDE5

3

8. PDE5

9.

10. [NO]

HIV

1. _____

12